

Serge Ferrari

Soltis
Harmony 88

The ideal compromise
for better comfort



Indoor use:

Roller shades, skylight shades, sliding panels

Outdoor use:

Exterior roller shades, skylight shades



■ **Perfect balance**

Soltis Harmony 88 provides the ideal openness factor to fully enjoy outdoor views while blocking up to 93% of solar contributions.

■ **Design and style**

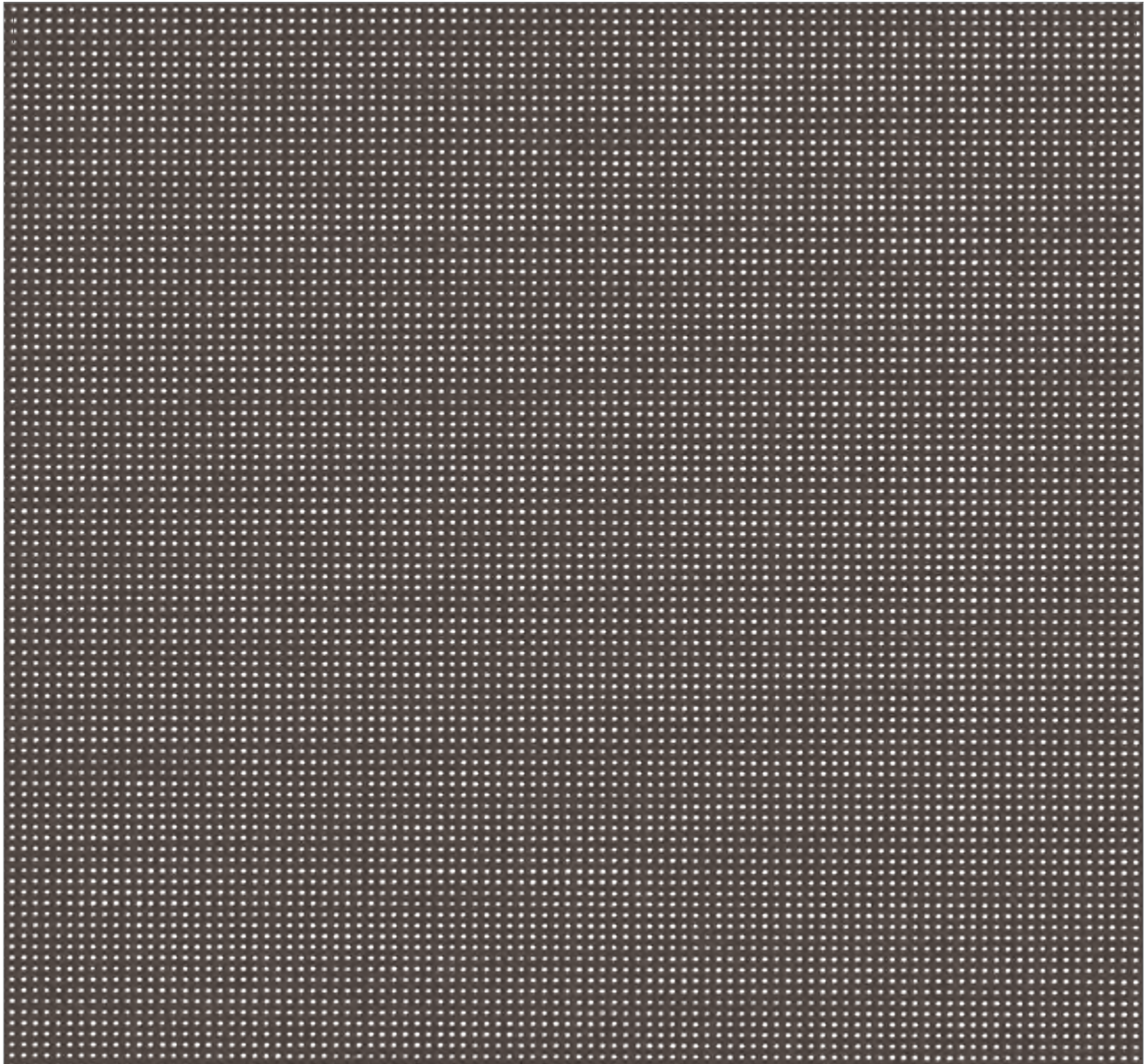
An even weave pattern, a unique textured appearance and a range of 17 colors to coordinate with your interior.

■ **Long-lasting and sustainable**

The Précontraint technology gives our materials an exceptionally long life. They are 100% recyclable at the end of their service life thanks to the Taxyloop process. Soltis Harmony 88 helps maintain good indoor air quality, as proven by its Greencard Gold certification.

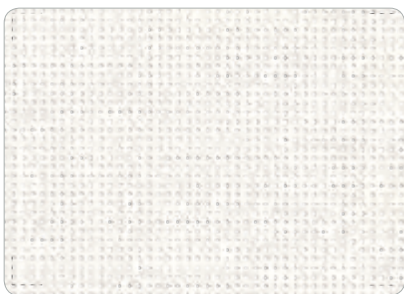
The right balance
so you can enjoy only
the best of the sun





Bronze 177 cm — 267 cm

88-2043



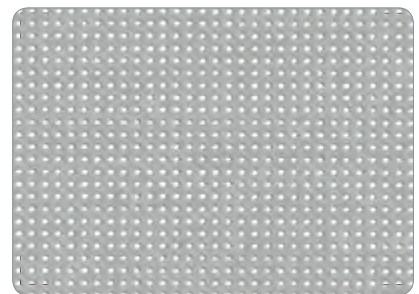
White 177 cm — 267 cm

88-2044



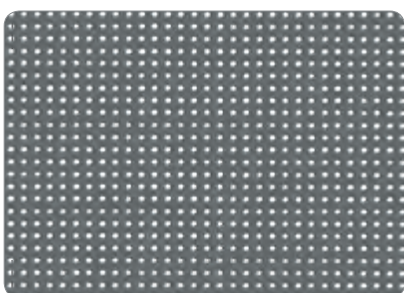
Boulder 177 cm — 267 cm

88-2171



Alu/Alu 177 cm — 267 cm

88-2048



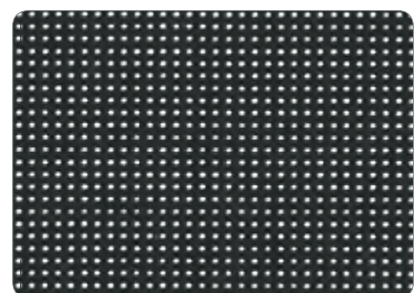
Concrete 177 cm — 267 cm

88-2167



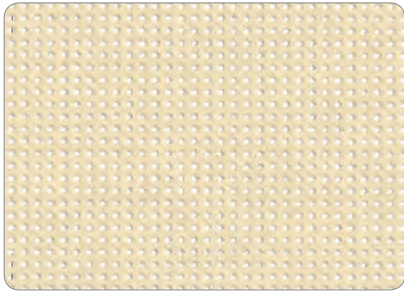
Anthracite 177 cm — 267 cm

88-2047

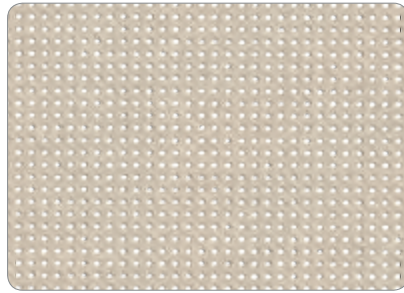


Black 177 cm — 267 cm

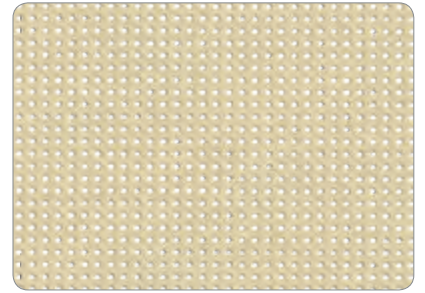
88-2053



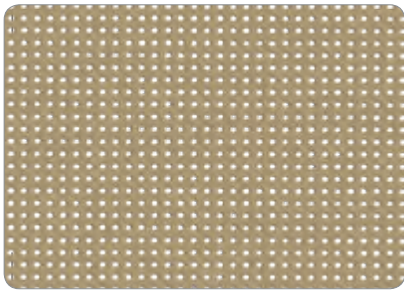
Champagne 177 cm — 267 cm 88-2175



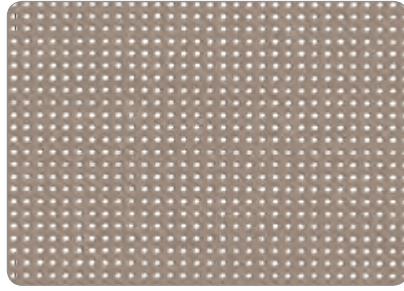
Sandy beige 177 cm — 267 cm 88-2135



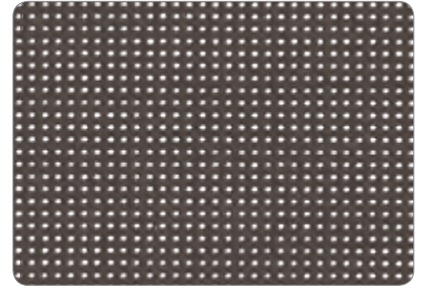
Hemp 177 cm — 267 cm 88-50265



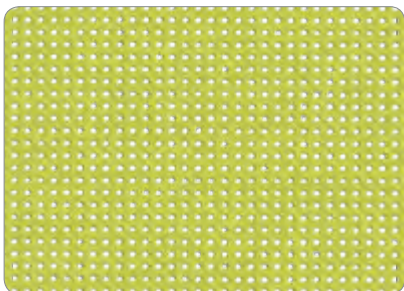
Pepper 177 cm — 267 cm 88-2012



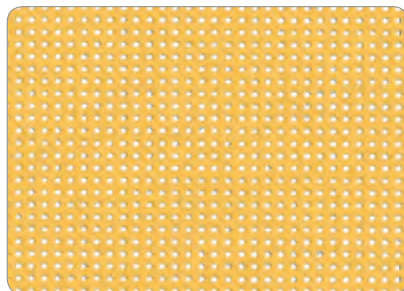
Ash brown 177 cm — 267 cm 88-50329



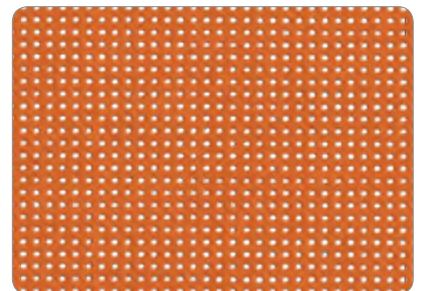
Bronze 177 cm — 267 cm 88-2043



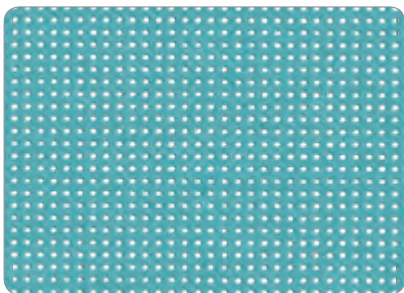
Bamboo 177 cm 88-50333



Apricot 177 cm 88-50332



Paprika 177 cm 88-50308



Bermuda 177 cm 88-50306

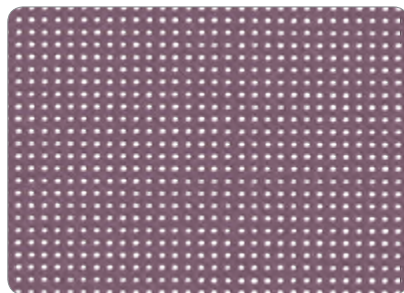
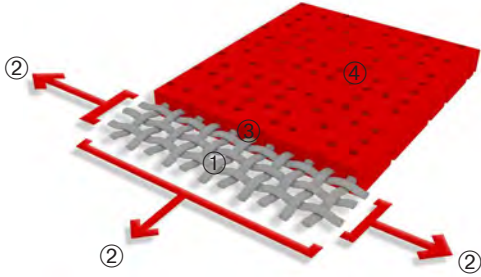


Fig 177 cm 88-50335

■ Exclusive Précontraint® technology

Patented worldwide, the Précontraint® Serge Ferrari technology involves keeping the composite under tension throughout the manufacturing cycle. It gives our materials exceptional performance that enable them to surpass market standards in terms of dimensional stability, mechanical strength, coating thickness and flatness.



High-tenacity polyester micro-yarn base cloth	①	Superior elongation and tear resistance
A coating with fabrics under bi-axial constant tension in both warp and weft directions	②	No deformation during processing and use
Greater coating at the top of the yarns and a dirt resistant surface treatment	③	Superior aesthetic and mechanical durability
Exceptional flatness and thinness	④	Smooth finish easy to clean, space saving, easy rolling

■ Solar and light properties (EN 14501)

	TS	RS	AS	TV n-h	EN 13363-1* Type "C" glazing		EN 13363-2** Type "D" glazing	
					g_{tot}^e	g_{tot}^i	g_{tot}^e	g_{tot}^i
88-2012	12	29	59	10	0.13	0.48	0.07	0.23
88-2043	9	12	79	8	0.13	0.53	0.07	0.28
88-2044	24	65	11	22	0.17	0.36	0.13	0.12
88-2047	9	8	83	9	0.13	0.54	0.07	0.28
88-2048	13	44	43	12	0.12	0.43	0.08	0.19
88-2053	8	6	86	8	0.13	0.55	0.07	0.29
88-2135	14	42	44	11	0.13	0.43	0.08	0.20
88-2167	9	16	75	9	0.13	0.52	0.07	0.26
88-2171	13	38	49	11	0.13	0.45	0.08	0.20
88-2175	24	62	14	21	0.17	0.37	0.12	0.14
88-50265	15	44	41	12	0.14	0.43	0.08	0.20
88-50306	13	37	50	10	0.13	0.45	0.08	0.21
88-50308	16	33	51	10	0.15	0.46	0.09	0.25
88-50329	10	26	64	9	0.12	0.48	0.06	0.24
88-50332	24	52	24	19	0.18	0.40	0.12	0.19
88-50333	17	33	50	13	0.16	0.46	0.09	0.24
88-50335	10	17	73	9	0.13	0.51	0.07	0.26

TS: Solar Transmission (%)
RS: Solar Reflection (%)
AS: Solar Absorption (%)
TS + RS + AS = 100% of incident energy
TV n-h: Normal-hemispherical visible light transmission (%)
g_{tot}^e : External solar factor
g_{tot}^i : Internal solar factor

*Simplified method EN 13363-1

The transmission and reflection values above are based on the integrated values of the glass combined with the screen. These are used to calculate the g_{tot} value. Type "C" glazing is double glazing and insulated with low emissivity in position 3 (4 + 16 + 4; Argon-filled) $g = 0.59 - U = 1.2$.

**Detailed method EN 13363-2

The transmission and reflection values above are based on the integrated values of the glass combined with the screen. These are used to calculate the g_{tot} value. Type "D" glazing is double glazing and insulated with low emissivity in position 2 (4 + 16 + 4; Argon-filled) $g = 0.32 - U = 1.1$.

Soltis

Harmony 88

	■ Technical properties	Standards
Openness factor	8%	
Weight	360 g/m ² — 10.6 oz/sqyd	EN ISO 2286-2
Thickness	0.45 mm — 450 microns	
Width	177 cm - 267 cm — 69.7 in. - 105.1 in.	
■ Length of rolls		
Standard format length in 177 cm	50 lm — 54.68 yds	
Standard format length in 267 cm	40 lm — 43.74 yds	
■ Physical properties		
Tensile strength (warp/weft)	140/145 daN/5 cm	EN ISO 1421
Tensile strength (warp/weft)	14/14 daN	DIN 53.363
■ Flame retardancy		
Rating	M1/NFP92-507 — METHOD 1 AND 2 /NFPA 701 — CSFMT19 — CLASS A /ASTM E84 — CAN ULCS109 CLASSE 1 /EN 13773 — M-1 /UNE 23727-90 — BS 7837 — BS 5867 VKF 5.3 /SN 198898 — SCHWERBRENNBAR Q1-Tr1 /ONORM A 3800-1 — B1 /DIN 4102-1 1530.3/AS/NZS — GROUP 1 /AS NZS 3837 — G1 /GOST 30244-94 — CLASSE 1 /UNI 9177-87	
Euroclass	B-s2,d0	EN 13501-1
■ Management systems		
for Quality		ISO 9001

■ Certifications, labels, warranties, recycling



With **S+** Serge Ferrari goes further than the standards...
(consult us for further information)

■ Tools and services

- LCA and FDES (Health and Environmental Datasheet) available on request
- Personalised service for simulating your project's thermal performance and related Soltis solar protection systems: please contact your Serge Ferrari representative
- Tool for evaluating energy savings generated by Soltis solar protection systems: www.textinergie.org

The technical data above are averaged values with a +/- 5% tolerance.

The buyer of our products is fully responsible for their application and their transformation with regard to any possible third party. The buyer of our products is responsible for their implementation and installation according to the standards, workmanship and safety regulations in force in destination countries. For information on our contractual warranty, please refer to the relevant terms and conditions.

The values quoted above represent results of tests performed in compliance with common design practices and are provided for information only to enable customers to make the best use of our products. Our products are subject to changes based on technical advances and we reserve the right to modify their characteristics at any time. The buyer of our products is responsible for checking the validity of the above data.